

# Samuel Coleridge-Taylor

# Christmas Overture

for Symphonic Band

*Arranged by*  
*Joe Derhake*

**INSTRUMENTATION**  
(optional parts marked \*)

1-FULL SCORE

1-PICCOLO\*

3-1st FLUTE

3-2nd FLUTE

1-1st OBOE\*

1-2nd OBOE\*

4-1st CLARINET in Bb

4-2nd CLARINET in Bb

4-3rd CLARINET in Bb

2-BASS CLARINET in Bb

1-CONTRA ALTO CLARINET in Eb/

CONTRA BASS CLARINET in Bb\*

1-1st BASSOON

1-2nd BASSOON

2-1st ALTO SAXOPHONE in Eb

2-2nd ALTO SAXOPHONE in Eb

2-TENOR SAXOPHONE in Bb

1-BARITONE SAXOPHONE in Eb

3-1st TRUMPET in Bb

3-2nd TRUMPET in Bb

3-3rd TRUMPET in Bb

2-1st HORN in F

2-2nd HORN in F

2-1st TROMBONE

2-2nd TROMBONE

2-3rd TROMBONE\*

3-EUPHONIUM in Treble or Bass Clef

4-TUBA

1-DOUBLE BASS\*

1-TIMPANI

1-CHIMES/ GLOCKENSPIEL

1-HARP (or KEYBOARD)

1-XYLOPHONE/ VIBRAPHONE

1-SNARE DRUM

1-CRASH CYMBALS

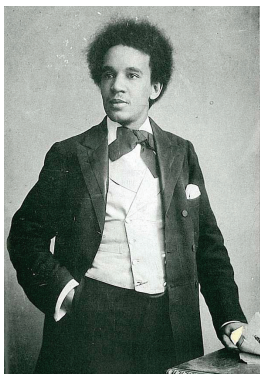
1-BASS DRUM

Grade 4

Duration: Approx. 4 Minutes



## Program Notes



**Samuel Coleridge-Taylor** (1875-1912) was an English-born composer and conductor who hailed from an English and African musical family. After discovering his inherent musical ability, Coleridge-Taylor's family arranged for him to study at the Royal College of Music under composition professor Charles Villiers Stanford. After completing his degree, Coleridge-Taylor was appointed a professor at the Crystal Palace School of Music and became the conductor of the Croydon Conservatoire Orchestra.

With his compositions, Samuel Coleridge-Taylor sought to draw from traditional African music and integrate it into the classical tradition, in a similar fashion to Brahms and Dvořák with Hungarian and Bohemian music. He was a prolific composer and a well-respected conductor in England and America, even touring in America and being received at the White House by President Theodore Roosevelt. His most celebrated work was his cantata *Hiawatha's Wedding Feast*.

On his death, close friend and poet Alfred Noyes said, "Too young to die: his great simplicity, his happy courage in an alien world, his gentleness, made all that knew him love him."

Samuel Coleridge-Taylor's *Christmas Overture* appeared posthumously in 1925. Originally orchestrated by Sydney Baynes, it features *God Rest Ye Merry Gentlemen* and *Hark the Herald Angels Sing*. It is thought by some to have been put together from incidental music he wrote for a children's play called *The Forest of Wild Thyme*. This band arrangement, based on Baynes' orchestra score, omits the largely developmental middle section of the original, shortening the performance time by two minutes, while retaining all of the traditional carol material.

## About the Arranger



**Joe Derhake** has been active professionally in music composition, arranging, teaching, performing and publishing for over 25 years. He has maintained a private music lessons practice since 1996, teaching students from grade school through adults on keyboard, band, combo, and folk instruments. His public debut as an arranger was in high school, performing popular tunes on local radio with fellow members of the school tuba section. Ever since, Joe has written, arranged, and recorded music in many genres, including classical, rock, Celtic, jazz, and of course wind band, which has remained a favorite since first picking up a horn in sixth grade. Derhake is based in St. Louis and has enjoyed the opportunity to help composers grow their careers, working in music publishing since 2004. He is currently vice president of Keiser Productions.

# Christmas Overture

for Symphonic Band

## Samuel Coleridge-Taylor

Arranged by Joe Derhake

Full Score

optional parts marked \*

5

**Moderato** (♩ = 116)

Piccolo\*

Flutes 1/2

Oboes 1/2\*

B♭ Clarinets 1/2

B♭ Clarinets 3

B♭ Bass Clarinets

E♭ Contra Alto Clarinet\*

Bassoons

Alto Saxophones 1/2

Tenor Saxophones

Baritone Saxophone

**Moderato (♩ = 116)**

5 1. soli +2.

B♭ Trumpets 1/2

B♭ Trumpets 3

Horns in F 1/2

Trombones 1/2

Trombones 3\*

Euphoniums

Tubas

Double Bass\*

Timpani

Chimes

Harp or Keyboard

Xylophone

Snare Drum

Crash Cymbals

Bass Drum

S1012